



MONTHLY MEMBERSHIP PROGRESS REPORT

District 21 A

Results as of: 4/30/2015

GMT: Kenneth Schwols

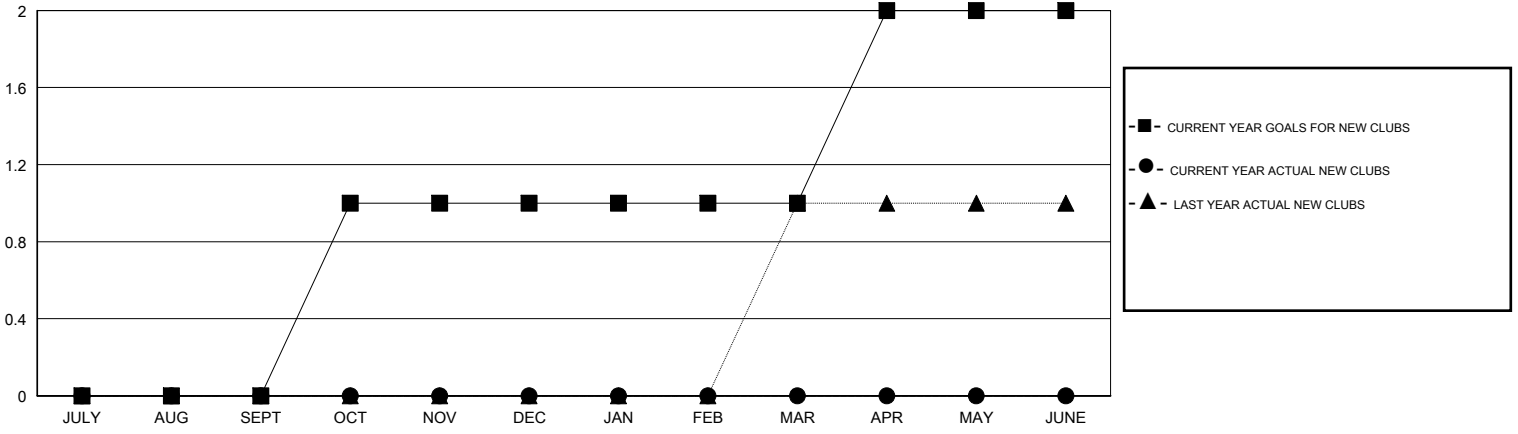
LOCATION ARIZONA

GMT CA 1

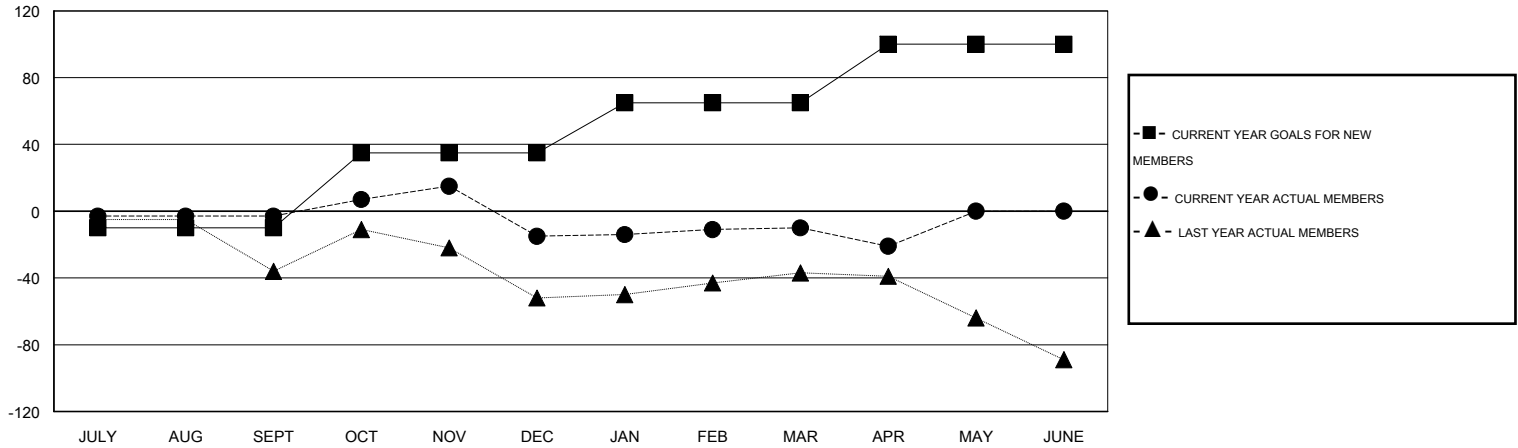
| Clubs | | | | |
|-----------------------|---------------|-----------|---------------|---------------|
| RESULTS FOR 2014-2015 | | | | |
| QUARTER | NEW CLUB GOAL | NEW CLUBS | DROPPED CLUBS | NET GAIN/LOSS |
| JULY/AUG/SEPT | 0 | 0 | 0 | 0 |
| OCT/NOV/DEC | 1 | 0 | 1 | -1 |
| JAN/FEB/MAR | 0 | 0 | 0 | 0 |
| APR/MAY/JUNE | 1 | 0 | 0 | 0 |

| Members | | | | |
|-----------------------|-----------------|-------------------------------|-----------------|---------------|
| RESULTS FOR 2014-2015 | | | | |
| QUARTER | NEW MEMBER GOAL | CHARTER AND NEW MEMBERS ADDED | DROPPED MEMBERS | NET GAIN/LOSS |
| JULY/AUG/SEPT | -10 | 18 | 21 | -3 |
| OCT/NOV/DEC | 45 | 37 | 49 | -12 |
| JAN/FEB/MAR | 30 | 29 | 24 | 5 |
| APR/MAY/JUNE | 35 | 4 | 15 | -11 |

GOALS AND ACTUAL NEW CLUBS CUMULATIVE



GOALS AND ACTUAL MEMBERS CUMULATIVE



| | |
|------------------|--|
| DROPPED CLUBS: 1 | |
|------------------|--|

24 CLUBS OF 36 ADDED 1 OR MORE NEW MEMBERS

| GENDER DISTRIBUTION | |
|---------------------|--------------|
| MALE | 457 (59.20%) |
| FEMALE | 315 (40.80%) |

| DROPPED MEMBERS | |
|-----------------|------------|
| DECEASED | 11 |
| CLUB CANCELLED | 0 |
| OTHER | 98 |
| TOTAL | 109 |

[CLICK HERE FOR HEALTH ASSESSMENT DATA](#)

| | |
|-----------------------|-----|
| FAMILY UNIT MEMBERS | 205 |
| HEAD OF HOUSEHOLD | 102 |
| NON-HEAD OF HOUSEHOLD | 103 |